



## City of Fife Temporary Encampment

### Addendum #1

Date of Issue: May 31, 2021  
Date of Opening: Revised – June 9th, 2022 10:00am

#### Notice to All Plan Holders:

This Addendum #1, containing the following revisions, additions, deletions and/or clarifications is hereby made part of the Plan and Contract Documents for the above-named project. Bidders shall take this Addendum into consideration when preparing and submitting their bids and it shall be attached to the Contract Documents.

Contractors shall acknowledge receipt of this Addendum #1 in the place provided in the Proposal Form (page LD-6). Failure to do so may disqualify the Bidder from consideration of its bid.

CONTRACT DOCUMENTS
--------------------

1. Legal Documents:

- a. Add the following to the Invitation for Bids (LD-2). "The Engineer's estimated range for this project is between \$260,000 and \$310,000 plus sales tax.
- b. Revise the Invitation to bid (LD-1 to LD-2) as follows:
  - i. Paragraph 1 LD-1  
Notice is hereby given that sealed bids will be received by the City of Fife at City Hall up to the hour of 10:00 a.m. on June 9, 2022, for the City of Fife **FIFE TEMPORARY ENCAMPMENT** and will then be opened and publicly read. City Hall is located at **5411 23rd Street East, Fife, Washington**. Proposals received after 10:00 a.m. on June 9, 2022, will not be considered.
  - ii. Paragraph 3 LD-2  
No Bidder may withdraw his proposal after 10:00 a.m. on June 9, 2022 or before award of Contract, unless said award is delayed for a period exceeding sixty (60) days.

## 2. Proposal

- a. Remove and Replace the Proposal (LD-7 through LD-9) with the attached.
- b. The following describes the revisions to the proposal:
  - i. Removed item 131 "PVC Conduit, 6 In. Diam Schedule 80", renumbered following bid items
  - ii. Adjusted quantities for "PVC Conduit, \_\_\_ In. Diam Schedule 80" based on revisions to conduit layout for two (2) 200A meter bases.

## 3. Specifications

- a. Revise paragraphs one and two of section 8-20.3(10) on pg SP-73 to read:

3 wire electrical services shall be used (120/240 volts, single phase, 60-hertz AC) between the power source and the service cabinets. The unfused power shall enter the service cabinets through a separate conduit (minimum 3").

The Contractor shall furnish and install new branch circuit breakers inside the electrical service cabinets that shall be of sufficient size as called out in Appendix B details for the building power. All circuit breakers shall be clearly labeled. The Contractor shall furnish and install all associated equipment and connect field wiring to field terminal strips. Field testing will be done by the Contractor in the presence of the Electrical Inspector.

- b. Revise section 9-29.12 to read:

The Service Cabinets shall be 120/240V single phase cabinets, metered, meeting National Electrical Code (NEC), EUSERC 308 and Tacoma Public Utility (TPU) requirements. Service Cabinets shall be sized to meet the requirements of the loads of the designed structures as shown in Appendix B. Panels shall be of sufficient size to accommodate the following:

- 12 Pallet Shelter buildings with 20 amp/120v panel in each building
- 1 Pallet Shelter office with 20 amp/120v panel
- 1 Pallet Shelter restroom with 125amp/240v panel
- 1 Modular Building with 200 amp/240v panel
- 1 Illumination Circuit 240v
- 1 Hot box strip heater

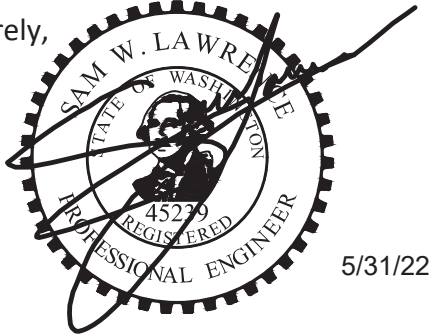
## 4. Plans

- a. Remove sheet 9 of 9 and replace with the attached.
  - i. Due to the difficulty for TPU to procure 400A meter bases, the City has opted to install two (2) 200A meter bases, rather than a single 400A.
- a. Clarification: Sheet 9 - The arm length is given as N/A due to the luminaire head being directly attached to the pole to match the other luminaires that exist onsite.

ALL OTHER REQUIREMENTS OF THE CONTRACT DOCUMENTS REMAIN IN EFFECT.

Please call or email if you have any further questions to (253) 896-8214 or [GVigoren@cityoffife.org](mailto:GVigoren@cityoffife.org), or (253) 896-8671 or [MJendrick@cityoffife.org](mailto:MJendrick@cityoffife.org)

Sincerely,



5/31/22

Sam Lawrence, P.E.

Attachments:

Revised Sheet 9

Revised Proposal

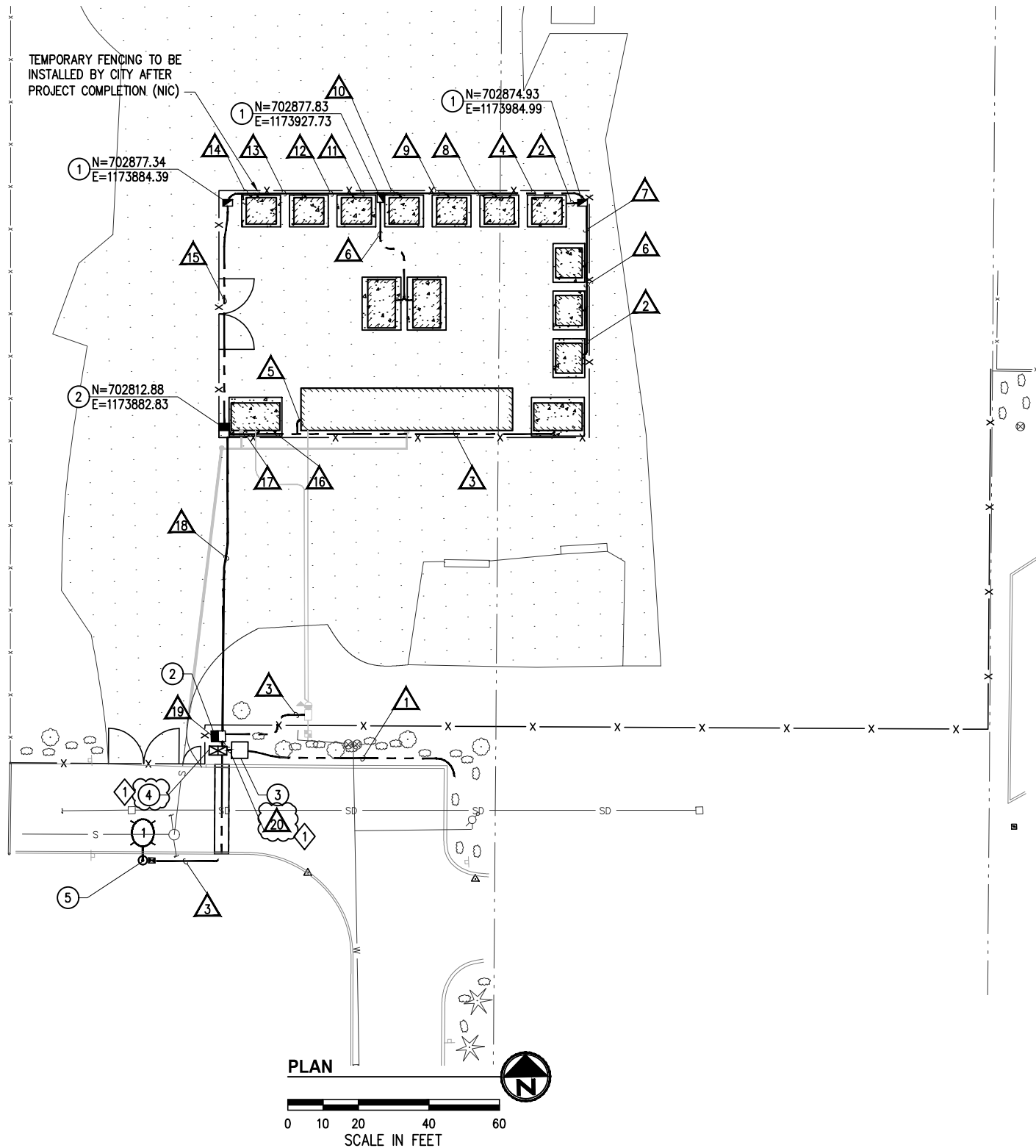
**WIRE NOTES**

#	RACEWAY / CONDUIT SIZE	#8 (POWER)	#6 (POWER)	#5 (POWER)	#70 (POWER)	#30 (FEEDER)	COMMENTS
1	4"						CONDUCTORS TO BE PROVIDED BY TPU
2	2"		2				
3	2"	2					
4	2"	8					
5	3"			2			
6	2"	2					
7	2"	2					
8	2"	2					
9	2"	2					
10	2"	2					
11	3"	12					
12	3"	12					
13	2"	2					
14	2"	2					
15	4"	12	12				
16	2"	2				2	
17	3"	2					
18	4"	12	12				
19	4"	12	12				
20	3"					3	FEEDER, NO GROUND
	3"					3	FEEDER, NO GROUND

**NOTES:**

- NEW PVC CONDUITS CONTAINING CONDUCTORS SHALL CONTAIN GROUND WIRE (NOT SHOWN IN THE TABLE ABOVE). GROUND WIRE SIZE SHALL MATCH THE LARGEST CONDUCTOR (MIN #8 AWG).
- ALL CONDUIT SHALL BE RIGID PVC SCH 80 UNLESS NOTED OTHERWISE ON THE PLANS.

TEMPORARY FENCING TO BE INSTALLED BY CITY AFTER PROJECT COMPLETION (NIC)



**GENERAL NOTES**

- ALL WORK SHALL BE COMPLETED IN ACCORDANCE WITH THE CITY OF FIFE STANDARD DETAILS, WSDOT/APWA STANDARD PLANS, STANDARD SPECIFICATION, SPECIAL PROVISIONS, AND THESE PLANS.
- UTILITY LOCATION (DIAL-A-DIG) PRIOR TO CONSTRUCTION SHALL BE THE RESPONSIBILITY OF THE CONTRACTOR. CONFLICTS SHALL BE BROUGHT TO THE ATTENTION OF THE ENGINEER FOR RESOLUTION.
- CONTRACTOR SHALL COORDINATE WITH THE TPU REPRESENTATIVE ADNANE ETTAYEBY AT (253)-502-8436 REGARDING THE ELECTRICAL SERVICE CONNECTION.
- FOR STREET LIGHTING CONNECTION WITH THE CITY OF FIFE, THE CONTRACTOR SHALL CONTACT GARY HAMMER AT (253)-922-9315.
- THE LOCATION OF ALL FEATURE TO BE INSTALLED BY THE CONTRACTOR ARE SHOWN FOR GRAPHICAL REPRESENTATION ONLY. FINAL LOCATIONS SHALL BE VERIFIED BY THE ENGINEER IN THE FIELD PRIOR TO INSTALLATION.
- NUMBER OF CONDUIT BENDS BETWEEN PULL POINTS SHALL NOT BE MORE THAN EQUIVALENT OF FOUR QUARTER BENDS (360 DEGREES TOTAL). IF NUMBER OF BENDS EXCEEDS 360 DEGREES, THE CONTRACTOR SHALL INSTALL ADDITIONAL JUNCTION BOXES, AS REQUIRED.
- FOR TRENCH DETAIL SEE DETAIL 1, SHEET 3.

**CONSTRUCTION NOTES**

- INSTALL TYPE 2 JUNCTION BOX PER WSDOT STD PLAN J-40.10-04.
- INSTALL TYPE 8 JUNCTION BOX PER WSDOT STD PLAN J-40.30-04.
- CONTRACTOR TO FURNISH AND INSTALL 554 TRANSFORMER VAULT PER TACOMA PUBLIC UTILITY (TPU) C-UG-1700.
- CONTRACTOR TO FURNISH AND INSTALL TWO 120/240VOLT 200AMP ELECTRICAL SERVICE CABINETS AND METERS. CABINETS AND METERS SERVICE SHALL MEET REQUIREMENTS OF TACOMA PUBLIC UTILITY (TPU) AND THE NATIONAL ELECTRIC CODE (NEC). ONE ELECTRICAL SERVICE CABINET AND METER SHALL BE FOR THE MODULAR KITCHEN/LAUNDRY BUILDING WHILE THE OTHER SHALL BE FOR THE REST OF THE BUILDINGS AND THE STREET LIGHT. SEE SPECIAL PROVISIONS.
- CONSTRUCTION FOUNDATION PER WSDOT STD. PLAN J-28.26 CASE L (PARKING LOTS), FOUNDATION DEPTH SHALL BE PER WSDOT STD. PLAN J-28.30 TYPE B. FURNISH AND INSTALL LUMINAIRE POLE AND LUMINAIRE. FOR LUMINAIRE TYPE SEE LUMINAIRE SCHEDULE, THIS SHEET. COMPLETE WIRING PER WIRE NOTES, THIS SHEET. SEE SPECIAL PROVISIONS.

**LEGEND**

EXISTING	NEW	DESCRIPTION
		ROADWAY LUMINAIRE AND POLE
		JUNCTION BOX TYPE 1, 2, 8
		ELECTRICAL SERVICE CABINETS
		CONDUIT
		WIRE NOTE

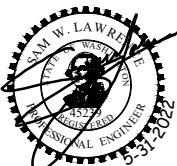
**LUMINAIRE SCHEDULE**

LUMINAIRE #	NORTHING	EASTING	LUMINAIRE TYPE	MOUNTING HEIGHT	ARM LENGTH	BASE	CIRCUIT #	COMMENTS
1			COBRA, 80W LED, 4000K, III, B2-U0-G2, 240v,	25	N/A	FIXED		

NO.	DATE	BY	APPR.	REVISIONS
1	5/22	TD	SWL	ADDENDUM #1-ELECTRICAL SERVICE CABINETS

**Approved By**

ENGINEERING MANAGER	DATE	21142LL.dwg	4/2022
PROJECT MANAGER	DATE	FILENAME	
PROJECT ENGINEER	DATE	DESIGNED BY	4/2022
		SWL	4/2022
		DRAWN BY	4/2022
		SWL	4/2022
		CHECKED BY	DATE



**KPG PSOMAS**  
 Tacoma  
 2502 Jefferson Avenue  
 Tacoma, WA 98402 253.627.0720  
 Seattle | Wenatchee | KPG.com

ADDENDUM #1



CITY OF FIFE  
 TEMPORARY VILLAGE

ELECTRICAL SERVICE PLAN  
 ELECTRICAL SITE PLAN

## SCHEDULE OF PRICES

### Fife Temporary Village

#### ALL ENTRIES SHALL BE WRITTEN IN INK OR TYPED TO VALIDATE BID

(Note: Unit prices for all items, all extensions, and total amount of bid must be shown.)

ITEM NO.	APPROX. QUANTITY	ITEM WITH UNIT PRICED BID		UNIT PRICE		AMOUNT	
				Dollars	Cts.	Dollars	Cts.
<b>Fife Temporary Village</b>							
100	1 EQ. ADJ.	Minor Change, per Equity Adjustment	1-04	\$ 5,000.00 (figures)		\$ 5,000.00 (figures)	
101	1 LS	Roadway Surveying, per Lump Sum	1-05	LUMP SUM (figures)		\$ (figures)	
102	1 LS	Record Drawings (Min. Bid \$500), per Lump Sum	1-05	LUMP SUM (figures)		\$ (figures)	
103	1 LS	Mobilization, per Lump Sum	1-09	LUMP SUM (figures)		\$ (figures)	
104	2 EA	Utility Potholing, per Each	2-02	\$ (figures)		\$ (figures)	
105	1 LS	Site Grading and Excavation Incl. Haul, per Lump Sum	2-03	LUMP SUM (figures)		\$ (figures)	
106	1 LS	Shoring or Extra Excavation Class B , per Lump Sum	2-09	LUMP SUM (figures)		\$ (figures)	
107	72 TON	Crushed Surfacing Top Course, per Ton	4-04	\$ (figures)		\$ (figures)	
108	10 EA	11 x 9 Conc. Building Pad, per Each	6-02	\$ (figures)		\$ (figures)	
109	4 EA	15 x 11 Conc. Building Pad, per Each	6-02	\$ (figures)		\$ (figures)	
110	1 EA	Water Meter Assembly, per Each	7-15	\$ (figures)		\$ (figures)	
111	1 EA	Reduced Pressure Backflow Assembly, per Each	7-15	\$ (figures)		\$ (figures)	
112	10 LF	Polyethelene Pipe for Water Service 1 In. Diam., per Linear Foot	7-15	\$ (figures)		\$ (figures)	
113	174 LF	Polyethelene Pipe for Water Service 3/4 In. Diam., per Linear Foot	7-15	\$ (figures)		\$ (figures)	

FIRM NAME \_\_\_\_\_

## SCHEDULE OF PRICES

### Fife Temporary Village

#### ALL ENTRIES SHALL BE WRITTEN IN INK OR TYPED TO VALIDATE BID

(Note: Unit prices for all items, all extensions, and total amount of bid must be shown.)

ITEM NO.	APPROX. QUANTITY	ITEM WITH UNIT PRICED BID	UNIT PRICE		AMOUNT	
			Dollars	Cts.	Dollars	Cts.
<b>Fife Temporary Village</b>						
114	2 EA	Building Utility Connection - Water, per Each	7-15	\$		\$
				(figures)		(figures)
115	76 LF	SDR 35 PVC Sanitary Sewer Pipe 8 In. Diam., per Linear Foot	7-17	\$		\$
				(figures)		(figures)
116	63 LF	SDR 35 PVC Sanitary Sewer Pipe 4 In. Diam., per Linear Foot	7-18	\$		\$
				(figures)		(figures)
117	2 EA	Building Utility Connection - Sewer, per Each	7-18	\$		\$
				(figures)		(figures)
118	3 EA	Sewer Cleanout, per Each	7-19	\$		\$
				(figures)		(figures)
119	1 LS	Erosion Control and Water Pollution Prevention, per Lump Sum	8-01	LUMP SUM		\$
				(figures)		(figures)
120	1 EA	Stabilized Construction Entrance, per Each	8-01	\$		\$
				(figures)		(figures)
121	241 LF	Silt Fence, per Linear Foot	8-01	\$		\$
				(figures)		(figures)
122	2 EA	Inlet Protection, per Each	8-01	\$		\$
				(figures)		(figures)
123	1 FA	Resolution of Utility Conflicts, per Force Account	8-05	\$ 5,000.00		\$ 5,000.00
				(figures)		(figures)
124	367 LF	Security Chain Link Fence, per Linear Foot	8-12	\$		\$
				(figures)		(figures)
125	1 EA	Swing Access Security Gate - 20-foot Width, per Each	8-12	\$		\$
				(figures)		(figures)
126	1 EA	Swing Access Security Gate - 5-foot Width, per Each	8-12	\$		\$
				(figures)		(figures)
127	1 LS	Driveway Restoration, per Lump Sum	8-19	LUMP SUM		\$
				(figures)		(figures)
128	1	Vegetated Area Restoration, per Lump Sum	8-19	LUMP SUM		\$

FIRM NAME \_\_\_\_\_

## SCHEDULE OF PRICES

### Fife Temporary Village

**ALL ENTRIES SHALL BE WRITTEN IN INK OR TYPED TO VALIDATE BID**

(Note: Unit prices for all items, all extensions, and total amount of bid must be shown.)

ITEM NO.	APPROX. QUANTITY	ITEM WITH UNIT PRICED BID	UNIT PRICE		AMOUNT	
			Dollars	Cts.	Dollars	Cts.
<b>Fife Temporary Village</b>						
	LS	Vegetated Area Restoration, per Lump Sum		(figures)		(figures)
129	1 EA	Install Structure - TPU 554 Vault, per Each	8-20	\$ _____ (figures)	\$ _____ (figures)	
130	15 EA	Building Utility Connection - Electrical, per Each	8-20	\$ _____ (figures)	\$ _____ (figures)	
131	326 LF	PVC Conduit, 4 In. Diam Schedule 80, per Linear Foot	8-20	\$ _____ (figures)	\$ _____ (figures)	
132	107 LF	PVC Conduit, 3 In. Diam Schedule 80, per Linear Foot	8-20	\$ _____ (figures)	\$ _____ (figures)	
133	574 LF	PVC Conduit, 2 In. Diam Schedule 80, per Linear Foot	8-20	\$ _____ (figures)	\$ _____ (figures)	
134	1 LS	Illumination System, Complete, per Lump Sum	8-20	LUMP SUM (figures)	\$ _____ (figures)	
135	2 EA	Junction Box Type 8, per Each	8-20	\$ _____ (figures)	\$ _____ (figures)	
136	3 EA	Junction Box Type 2, per Each	8-20	\$ _____ (figures)	\$ _____ (figures)	
<b>PROJECT SUBTOTAL = \$ _____</b>						
<b>WSST (10%) = \$ _____</b>						
<b>PROJECT TOTAL = \$ _____</b>						

FIRM NAME \_\_\_\_\_