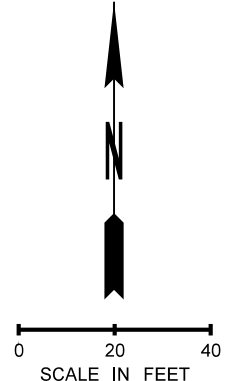
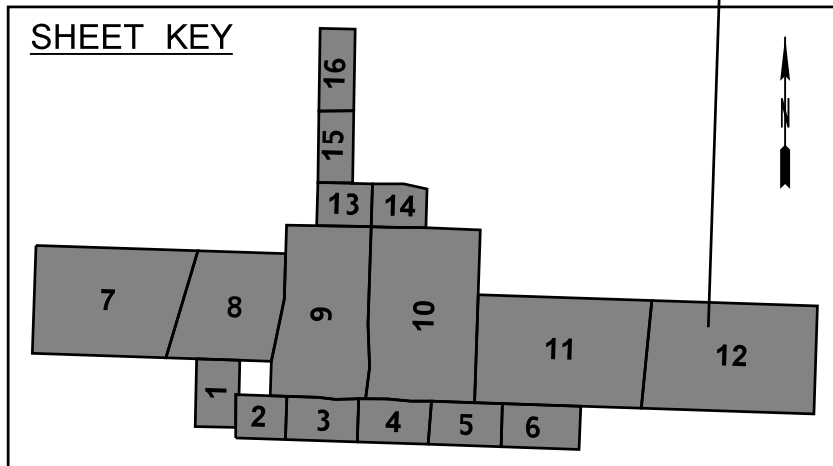


**GENERAL NOTES:**

1. COBRA HEAD LUMINAIRE SHALL BE INSTALLED AT THE INTERSECTION.



CODE	REVISION DESCRIPTION	DATE	BY

DESIGNED BY: AHC  
 DRAFTED BY: JLB  
 CHECKED BY: CLM  
 PROJ. MANGER: EHS

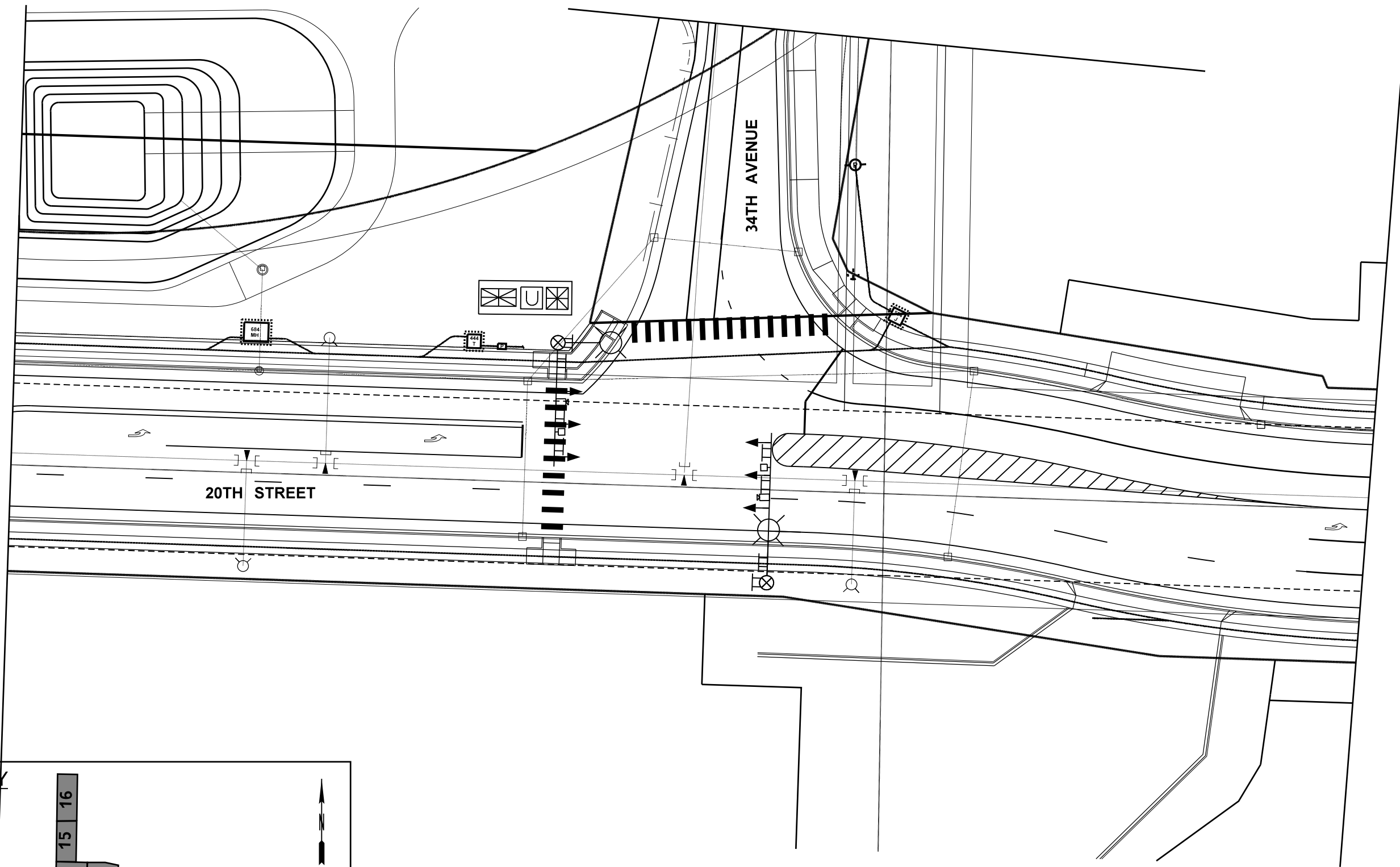


WSP USA Inc.  
 33301 9th Avenue South  
 Suite 300  
 Federal Way, WA 98003-2600  
 TEL: (206) 431-2300  
 FAX: (206) 431-2250

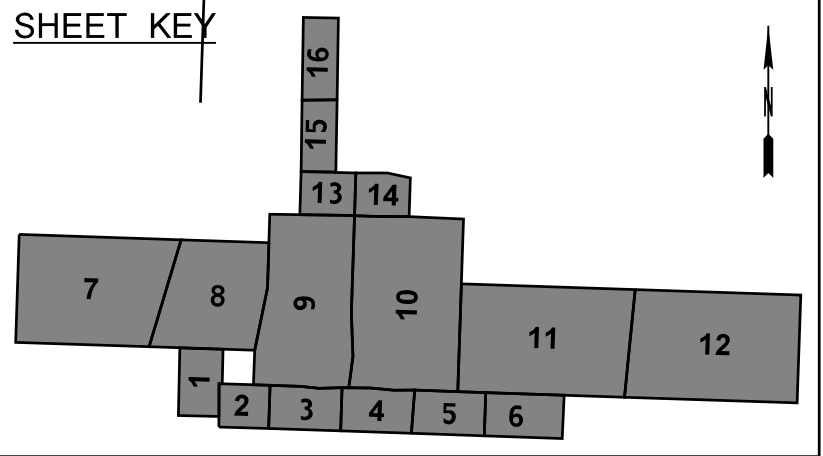
**PRELIMINARY**

**INTERSTATE 5  
 PORT OF TACOMA ROAD INTERCHANGE  
 TRAFFIC SIGNAL PLAN**

PLAN NUMBER  
**TS01**  
 SHEET #  
 OF #  
 SHEETS

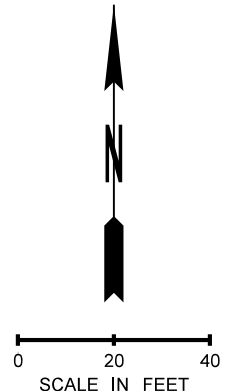


SHEET KEY



GENERAL NOTES:

- 1. COBRA HEAD LUMINAIRE SHALL BE INSTALLED AT THE INTERSECTION.



CODE	REVISION	DESCRIPTION	DATE	BY

DESIGNED BY: AHC
DRAFTED BY: JLB
CHECKED BY: CLM
PROJ. MANGER: EHS

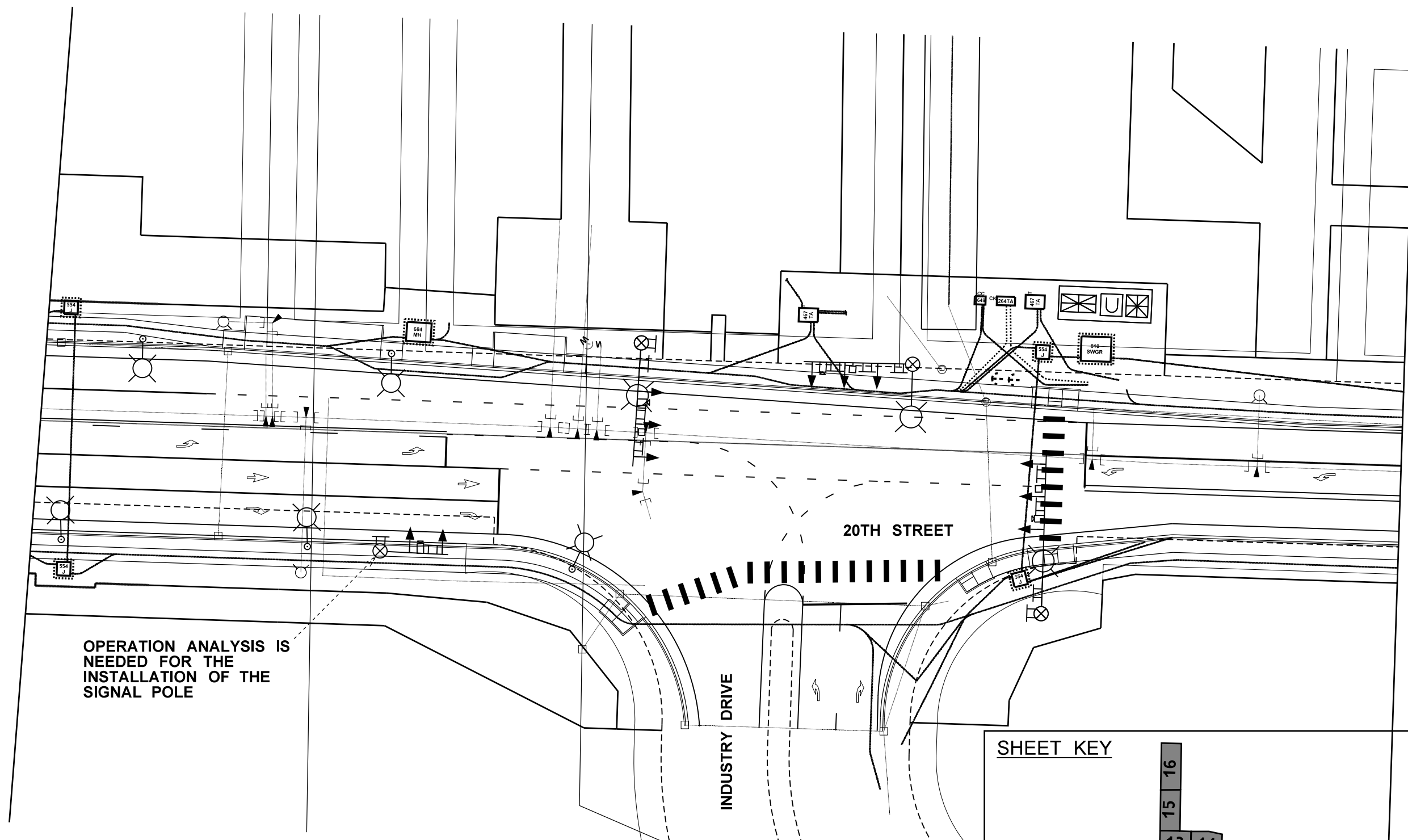


WSP USA Inc.  
33301 9th Avenue South  
Suite 300  
Federal Way, WA 98003-2600  
TEL: (206) 431-2300  
FAX: (206) 431-2250

**PRELIMINARY**

**INTERSTATE 5  
PORT OF TACOMA ROAD INTERCHANGE  
TRAFFIC SIGNAL PLAN**

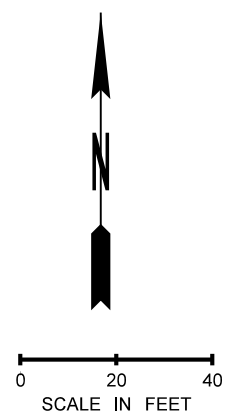
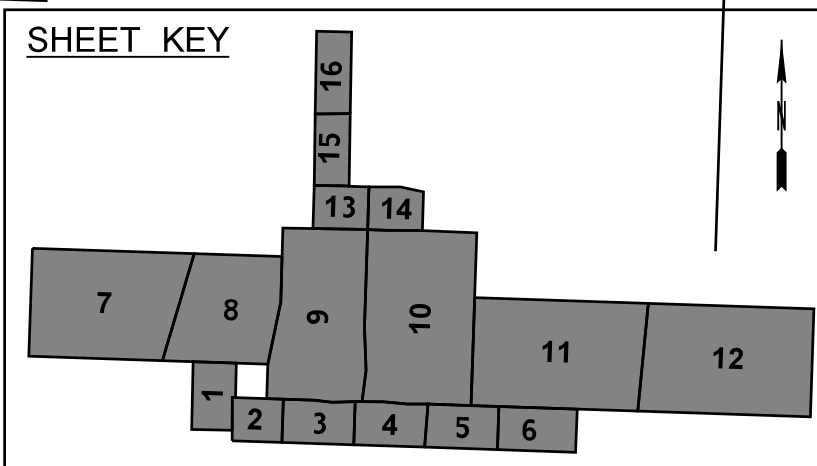
PLAN NUMBER <b>TS02</b>
SHEET # OF # SHEETS



OPERATION ANALYSIS IS NEEDED FOR THE INSTALLATION OF THE SIGNAL POLE

**GENERAL NOTES:**

1. COBRA HEAD LUMINAIRE SHALL BE INSTALLED AT THE INTERSECTION.



CODE	REVISION	DESCRIPTION	DATE	BY

DESIGNED BY: AHC  
 DRAFTED BY: JLB  
 CHECKED BY: CLM  
 PROJ. MANGER: EHS



WSP USA Inc.  
 33301 9th Avenue South  
 Suite 300  
 Federal Way, WA 98003-2600  
 TEL: (206) 431-2300  
 FAX: (206) 431-2250

**PRELIMINARY**

**INTERSTATE 5  
 PORT OF TACOMA ROAD INTERCHANGE  
 TRAFFIC SIGNAL PLAN**

PLAN NUMBER  
**TS03**  
 SHEET  
 #  
 OF  
 #  
 SHEETS