

# Interstate 5: Port of Tacoma Interchange Improvement

## Project Description

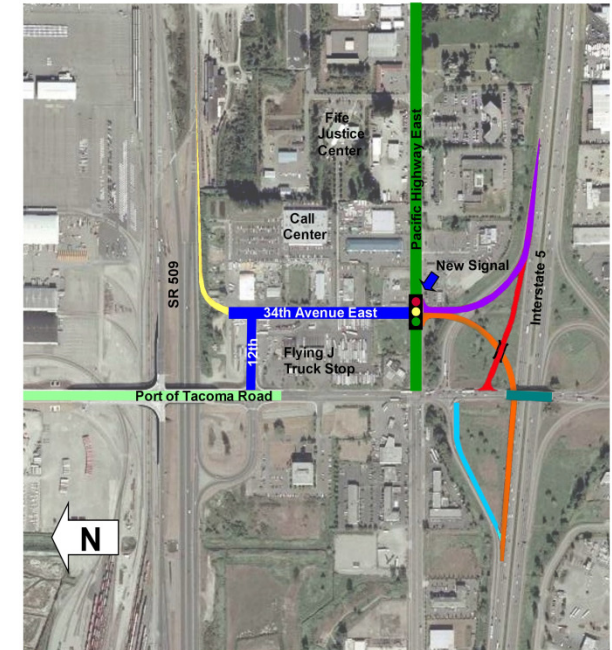
This project will provide road, intersection, and interchange improvements of great value to the Port of Tacoma, the surrounding industrial area, and businesses in the Cities of Fife and Tacoma. The project is a seven phase improvement to the Port of Tacoma Interstate 5 Interchange, Pacific Highway East and the Port of Tacoma Road. The Port of Tacoma indirectly accounts for more than 43,000 jobs and generates \$637 million in annual wages in Pierce County.

A Design Charrette and a Value Engineering Study completed for the project confirmed the need for the improvements and identified an alternative alignment for the I-5 / POT ramps that will provide an improved level of service for trucks traveling to and from the Port of Tacoma.

## Funding Status

Funding has been identified from the following sources: City of Fife, Washington State Freight Mobility Strategic Investment Board (FMSIB), TIB, WSDOT and Private Sector.




Port of Tacoma Road	WSDOT/FAST	Completed
Pacific Highway East	Fife/FMSIB/TIB/FHWA/Tribe	Completed
I-5 SB Entrance Ramp	Fife/Port of Tacoma	Completed
34 <sup>th</sup> Ave E / 12 <sup>th</sup> St E	Fife/TIB	2009-2011
I-5 Ramps at 34 <sup>th</sup>	Fife/FMSIB	2009-2011
POT Road Bridge	WSDOT/FHWA	2012
I-5 Ramps at 34 <sup>th</sup> , Phase II	WSDOT	2009-2011
I-5 Ramps at 34 <sup>th</sup> , Phase III	Fife/FMSIB	2010-2011
SR 509 Entrance Ramp	WSDOT	TBD



Funding Source for 34th Ave & Phase 1 I-5 Ramp	Contribution (millions)
Federal IMD	0.90
SAFETEA-LU	0.34
TIB	1.92
FMSIB	3.00
City of Fife	1.84
<b>Total</b>	<b>8.00</b>

Project Phase Schedule / Funding \$

	1998 - 2001	2004	2005	2006	2007	2008	2009	2010	2011	2012	2013	2014	2015	2016
Port of Tacoma Road	\$35M													
Pacific Highway East	\$4M													
I-5 SB Entrance Ramp	\$1.8M													
* IJR	\$1M													
* NEPA	In IJR													
* R/W	TBD													
* Final Design	TBD													
* Construction	TBD													
34th Ave E	\$3M													
I-5 Ramps at 34th, Ph 1	\$4M													
I-5 Ramps at 34th, Ph 2	\$3M													
I-5 Ramps at 34th, Ph 3	\$2M													
POT Road Bridge	TBD													
* Design	TBD													
* Construction	TBD													
SR 509 Entrance Ramp	TBD													

	Completed
	Obligated
	Future