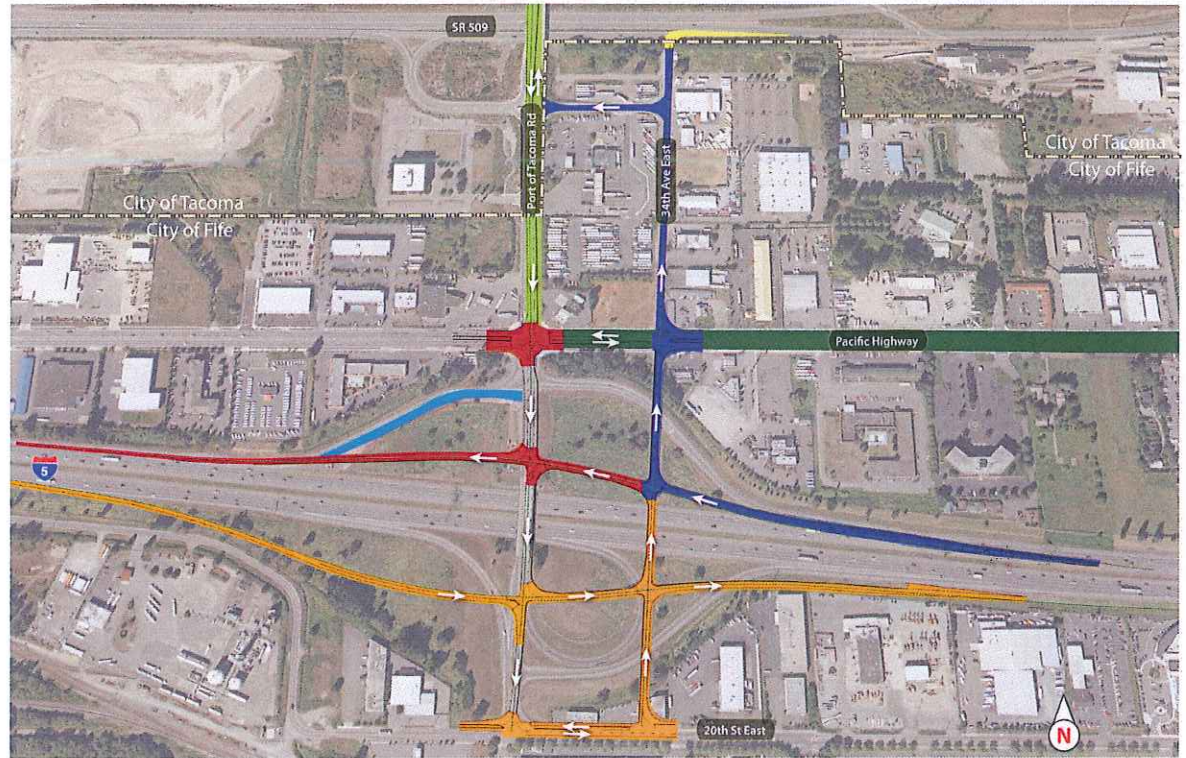


Project Description

This project will provide road, intersection, and interchange improvements of great value to the Port of Tacoma, the surrounding industrial area, and businesses in the Cities of Fife and Tacoma. The project is a multi-phased plan to improve the Port of Tacoma Road/Interstate 5 interchange, Pacific Highway East and the Port of Tacoma Road. The Port of Tacoma indirectly accounts for more than 43,000 jobs and generates \$637 million in annual wages in Pierce County. Design, Value Engineering and Traffic Modeling studies have confirmed the need for the improvements and identified an alternative configuration for the interchange and the I-5/POT road ramps. The interchange reconstruction will improve level of service for trucks traveling to and from the Port of Tacoma.

FUNDING SOURCE - PHASE I	CONTRIBUTION (\$ Millions)
City of Fife	0.5
FMSIB	3.0
Portion of Transportation Reauthorization (pending)	6.3
2011 Appropriation Request	2.4
Total - Phase I	12.2
FUNDING SOURCE - PHASE II	CONTRIBUTION (\$ Millions)
City of Fife	0.5
FMSIB	5.0
Portion of Transportation Reauthorization (pending)	3.3
Total - Phase II	8.8
FUNDING SOURCE - PHASE III	CONTRIBUTION (\$ Millions)
City of Fife	0.5
FMSIB	8.0
Unfunded	19.0
Total - Phase III	27.5



Project Segment

- Port of Tacoma Road
- Pacific Highway East
- I-5 Southbound Entrance Ramp
- POT Road I-5 Interchange Phase I
- 34th Avenue East/12th Street East
- POT Road I-5 Interchange Phase II
- POT Road I-5 Interchange Phase III
- SR 509 Entrance Ramp

Funding Partners

- WSDOT/FAST
- Fife/FMSIB/TIB/FHWA/Tribe
- Fife/Port of Tacoma
- Fife/FMSIB
- Fife
- Fife/FMSIB/WSDOT
- Fife/FMSIB/WSDOT
- WSDOT

Milestones

- Completed
- Completed
- Completed
- 2009-2012
- 2009-2012
- 2015-2016
- 2015-2016
- TBD

SUMMARY OF BENEFITS

- Improves Access to Port of Tacoma
- Improves Safety
- Improves I-5 Main Line Operation

Project Phase	Funding	1998-2001	2004	2005	2006	2007	2008	2009	2010	2011	2012	2013	2014	2015	2016	
Port of Tacoma Road	\$35.0M	[Green bar]														
Pacific Highway East	\$4.0M	[Green bar]														
I-5 SB Entrance Ramp	\$1.8M	[Blue bar]														
POT Road/I-5 Interchange	\$50M	[Blue bar]														
UR & NEPA	\$1.5M	[Blue bar]														
Right-of-way	IC*	[Blue bar]														
Final Design	IC*	[Blue bar]														
Construction**		[Blue bar]														
Phase I	\$12.2M	[Blue bar]														
Phase II	\$8.8M	[Blue bar]														
Phase III	\$27.5M	[Blue bar]														
SR 509 Entrance Ramp	TBD	[Yellow bar]														

* Included in Construction Dollars

** Construction Dollars are for Year of Expenditure

Partners



Washington State Department of Transportation